

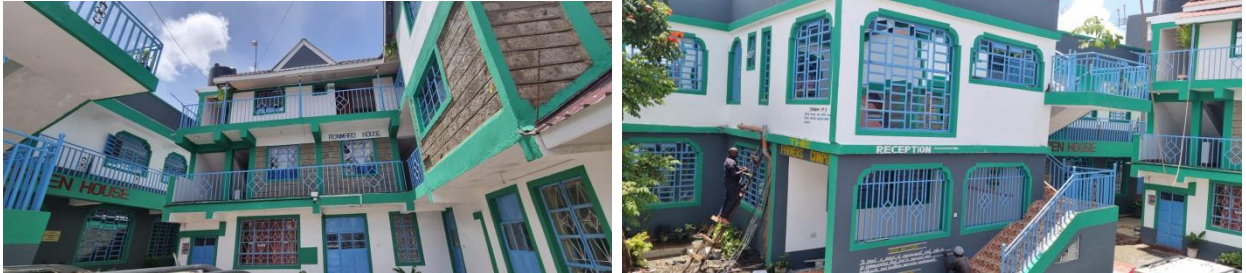
PO Box: 4171 01002 Madaraka Thika

Tel: 254 720-323-134 Email: growbiointensivecenterkenya@gmail.com

Mr. and Mrs. Samuel & Peris Nderitu, Directors

Staff: John Kibet, Carol Atieno, Mary Gitau, Julius Wanjala, Carol Waithera,
Collins Chibole, Damaris Wanjiku, Moses Mbugua, Grace Mwikali, Lucy Mweche, Kennedy Kiprotich, Mary Njoki, Kennedy Waweru,
George Gitau, Philomena Njeri

G-BIACK CENTRE DEVELOPMENT



THE G-BIACK CONFERENCE FACILITY

One of G-BIACK's strategic objectives according to our Strategic Plan 2022-2026 is to have a viable educational centre that inspires, equips and transforms farmers and other visitors to implement and scale up ecological GROW BIOINTENSIVE agriculture in Kenya and beyond and to contribute to the well-being of the farming communities. Over the years since 2008 when the organization was initiated, we have grown organically through the support of our partners and friends and we have made big strides in developing our campus and having facilities that are able to accommodate different needs.

G-BIACK occupies 2 acres, with facilities consisting of training halls, a library, offices, a textiles sewing and tailoring classroom, a computer lab, a seed bank that has a collection of over 500 seed varieties, and an all-purpose classroom with a kitchen and hostels to provide farmers with on-site housing. Small animal husbandry resources are also kept for teaching purposes. Our latest facility is a multi purpose conference hall that can hold over 100 people.

We wish to thank everyone that has given their contribution over the years in the development of this organization. We are determined to play our part in training, empowering and transforming more communities on sustainable methods of living, as well as other solutions to the regional issues of food security, health, and poverty reduction.

Visit our website: www.g-biack.org.

Go to Google maps to see us from above by entering: G-BIACK, Thika, Kenya

Donations of any amount help us to reach out to vulnerable families.

G-BIACK is a registered NGO in Kenya, and donations are tax deductible.

Contributions may be made directly to G-BIACK or through Network for Good on our web site.

Or checks payable to Kilili Self Help Project may be written and sent to

260 Marion Ave., Mill Valley CA 94941 USA—no overhead will be deducted, meaning that 100% of every donation will be sent to G-BIACK for our programmes.

All contributions are tax-deductible